



Short Description



- Junction Box, fit for 4-wire and 6-wire load cells
- Cast aluminium housing, grey powdercoated
- Easy installation
- Surge protection

Available Models

Model	Amount of Connections	Full Article Description	Part Number
JB06C	3	JB06C-3	30060200
	4	JB06C-4	30060300
	6	JB06C-6	30060400
	8	JB06C-8	30060500

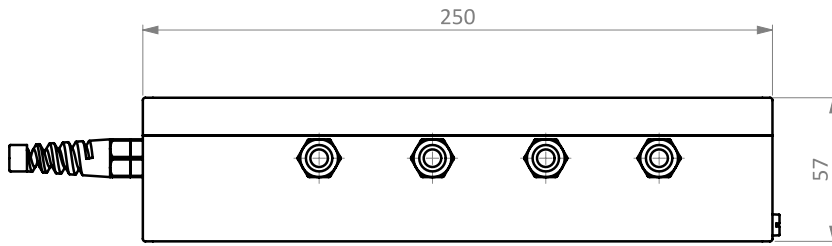
Detailed Specifications JB06

Load Cell Output Resistance Range	Ω	340 to 1100
Load Cell Input Resistance Range	Ω	340 to 1100
Excitation, Recommended Voltage	V(AC & DC)	5 to 17
Excitation, Maximum Voltage	V(AC & DC)	18
Load Cell Sensitivity Range	mV/V	0.6 – 3
Cable Diameter \varnothing	mm	5 - 6.2
Correction Method		Signal trim
Trimming Range	Ω	14
Temperature Range, Operating	$^{\circ}\text{C}$	-40 ~ +85
Ingress Protection		IP66
Housing Connected to Shield		Yes
External Grounding		Yes

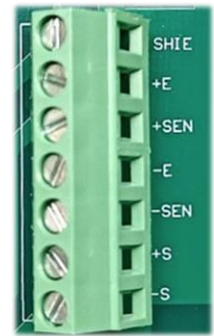
Type JB06 Junction Box

Dimensions in mm

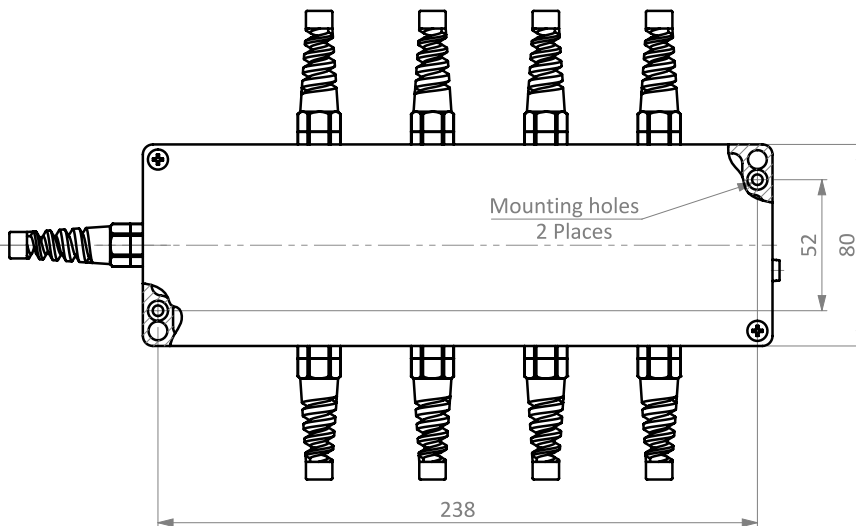
Front View



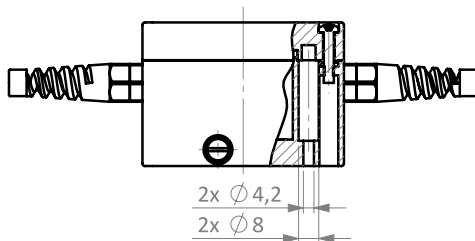
Connections



Top View



Side View



Isometric View

